

PLUMERIA

STUDIO

FLOORPLANS

NIKKI  BEACH
RESIDENCES
Antigua



- VILLA ENCLAVE:
- | | |
|------------|--------------|
| 1. APRA | 5. ALLAMANDA |
| 2. CASSIA | 6. MAHOGANY |
| 3. MARANTA | 7. ZAMIA |
| 4. ORCHID | |

PLUMERIA

STUDIO

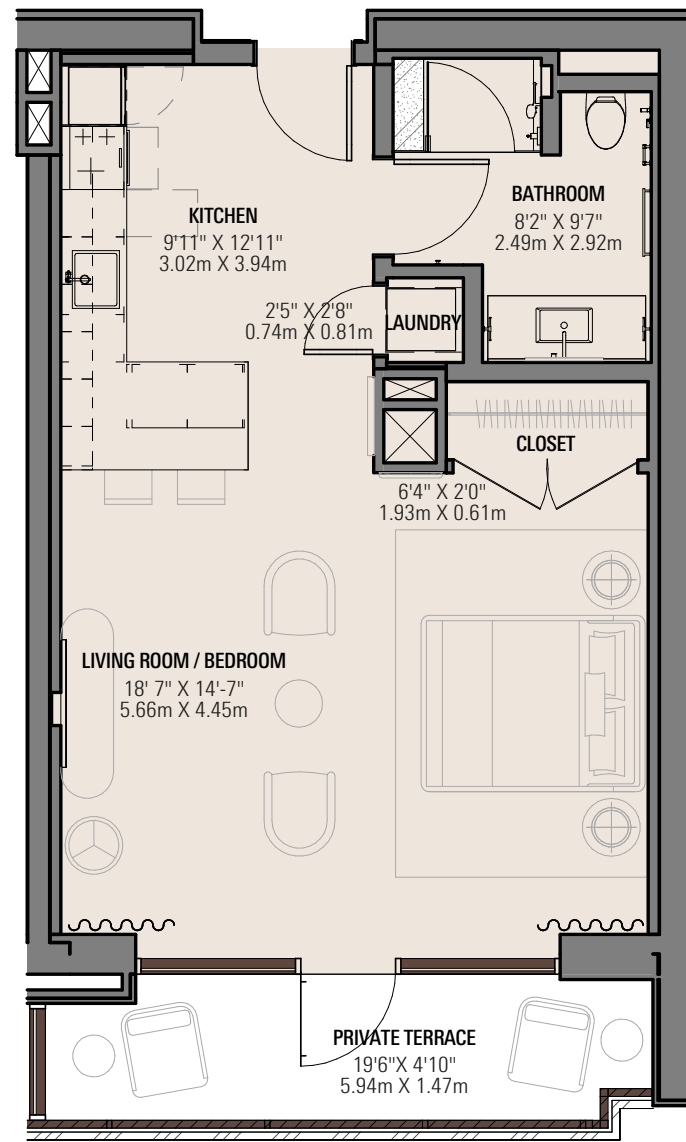
TYPE: PLAN C

Wake up to the marina, unwind on your terrace and enjoy resort style living.

MARINA SUNRISE VIEW



All floor plans, renderings, and illustrations are for marketing purposes only and are subject to change without notice. Dimensions, square footage, layouts, and configurations are approximate and may vary from actual construction. Furniture, appliances, and decorative elements shown are for illustrative purposes only and are not included in the purchase unless expressly stated. Developer reserves the right to modify plans, specifications, materials, and features without prior notice or obligation. All information is believed accurate but not guaranteed; interested parties should verify details independently. For complete specifications and the legally binding description of your unit, please refer to your executed Sale and Purchase Agreement.



STUDIO

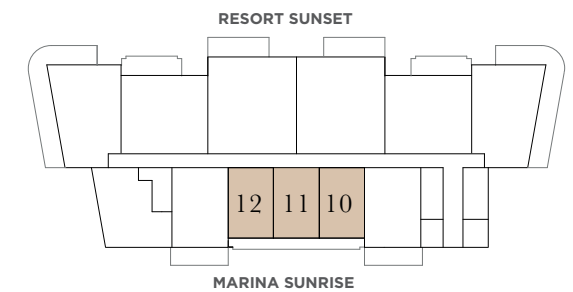
TYPE: PLAN C

MARINA SUNRISE VIEW

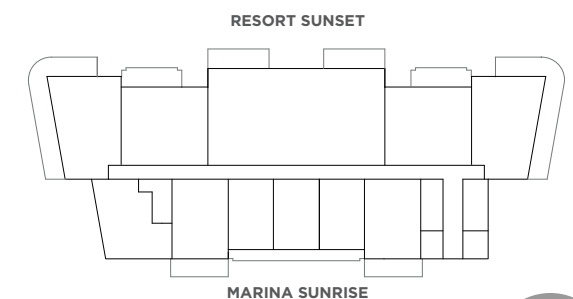
	SQ.FT.	SQ.M
INTERIOR	597	55.5
EXTERIOR	98	9.1
TOTAL	695	64.6

PLUMERIA

FLOORS 2, 3 & 4



GROUND FLOOR



BUILDING
PLUMERIA (R3)

PLAN
C

4 AVAILABLE PLANS OF THIS TYPE
A, A (ADA), B, C

TOTAL NUMBER OF "STUDIO - PLAN C" UNITS
15

RESIDENCE NUMBERS FOR STUDIO PLAN C (9 UNITS)
210/211/212/310/311/312/410/411/412



- VILLA ENCLAVE:
- | | |
|------------|--------------|
| 1. APRA | 5. ALLAMANDA |
| 2. CASSIA | 6. MAHOGANY |
| 3. MARANTA | 7. ZAMIA |
| 4. ORCHID | |

All floor plans, renderings, and illustrations are for marketing purposes only and are subject to change without notice. Dimensions, square footage, layouts, and configurations are approximate and may vary from actual construction. Furniture, appliances, and decorative elements shown are for illustrative purposes only and are not included in the purchase unless expressly stated. Developer reserves the right to modify plans, specifications, materials, and features without prior notice or obligation. All information is believed accurate but not guaranteed; interested parties should verify details independently. For complete specifications and the legally binding description of your unit, please refer to your executed Sale and Purchase Agreement.

PLUMERIA

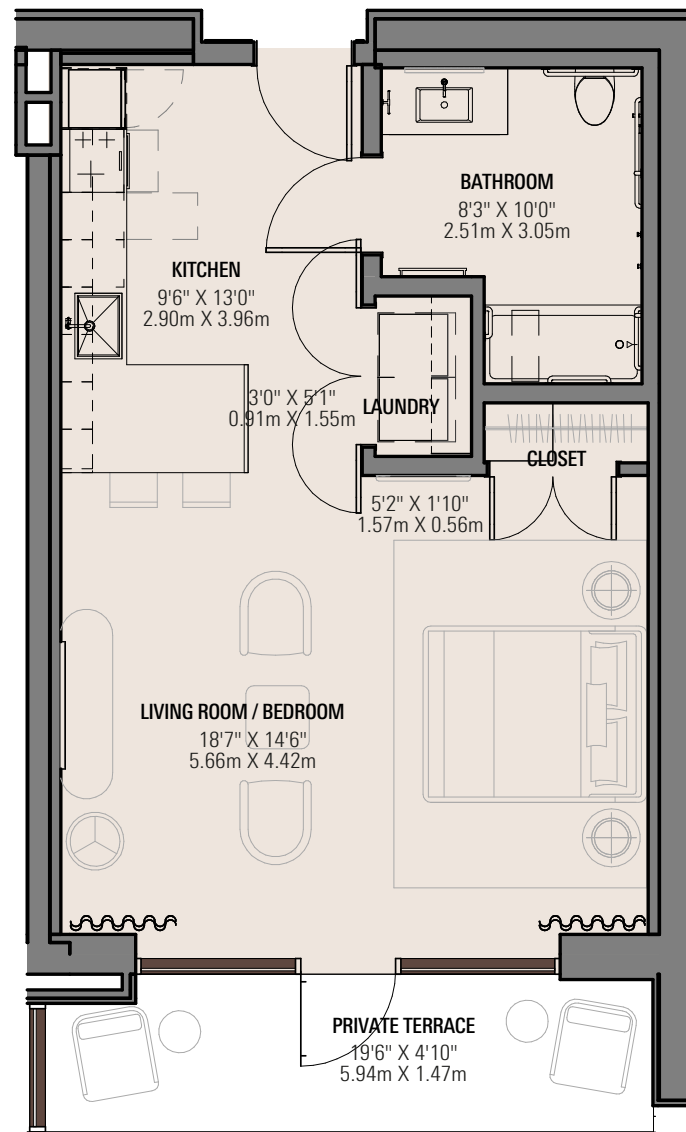
ACCESSIBLE STUDIO

TYPE: PLAN C (ADA)

Wake up to the marina, unwind on your terrace and enjoy resort-style living.

MARINA SUNRISE VIEW





ACCESSIBLE STUDIO

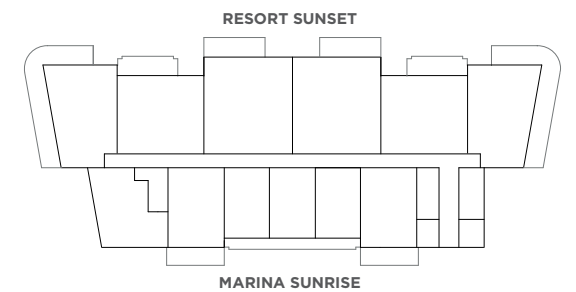
TYPE: PLAN C

MARINA SUNRISE VIEW

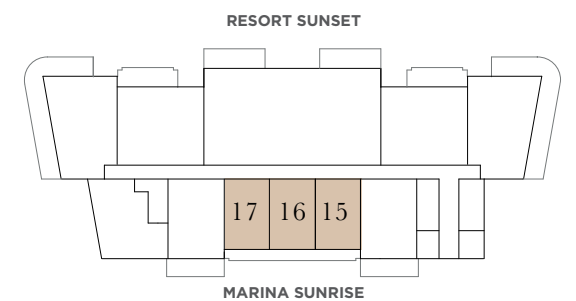
	SQ.FT.	SQ.M
INTERIOR	597	55.5
EXTERIOR	98	9.1
TOTAL	695	64.6

PLUMERIA

FLOORS 2, 3 & 4



GROUND FLOOR



BUILDING
PLUMERIA (R3)

PLAN
C(ADA)

4 AVAILABLE PLANS OF THIS TYPE
A, A (ADA), B, C

TOTAL NUMBER OF "STUDIO - PLAN C (ADA)" UNITS 15

RESIDENCE NUMBERS FOR STUDIO PLAN C - ADA (3 UNITS)
115/116/117

