

# PLUMERIA

---

## 2 BEDROOM

### FLOORPLANS

NIKKI  BEACH  
RESIDENCES  
*Antigua*



- VILLA ENCLAVE:
- |            |              |
|------------|--------------|
| 1. APRA    | 5. ALLAMANDA |
| 2. CASSIA  | 6. MAHOGANY  |
| 3. MARANTA | 7. ZAMIA     |
| 4. ORCHID  |              |

# PLUMERIA

2 BEDROOM  
2 BATHROOM

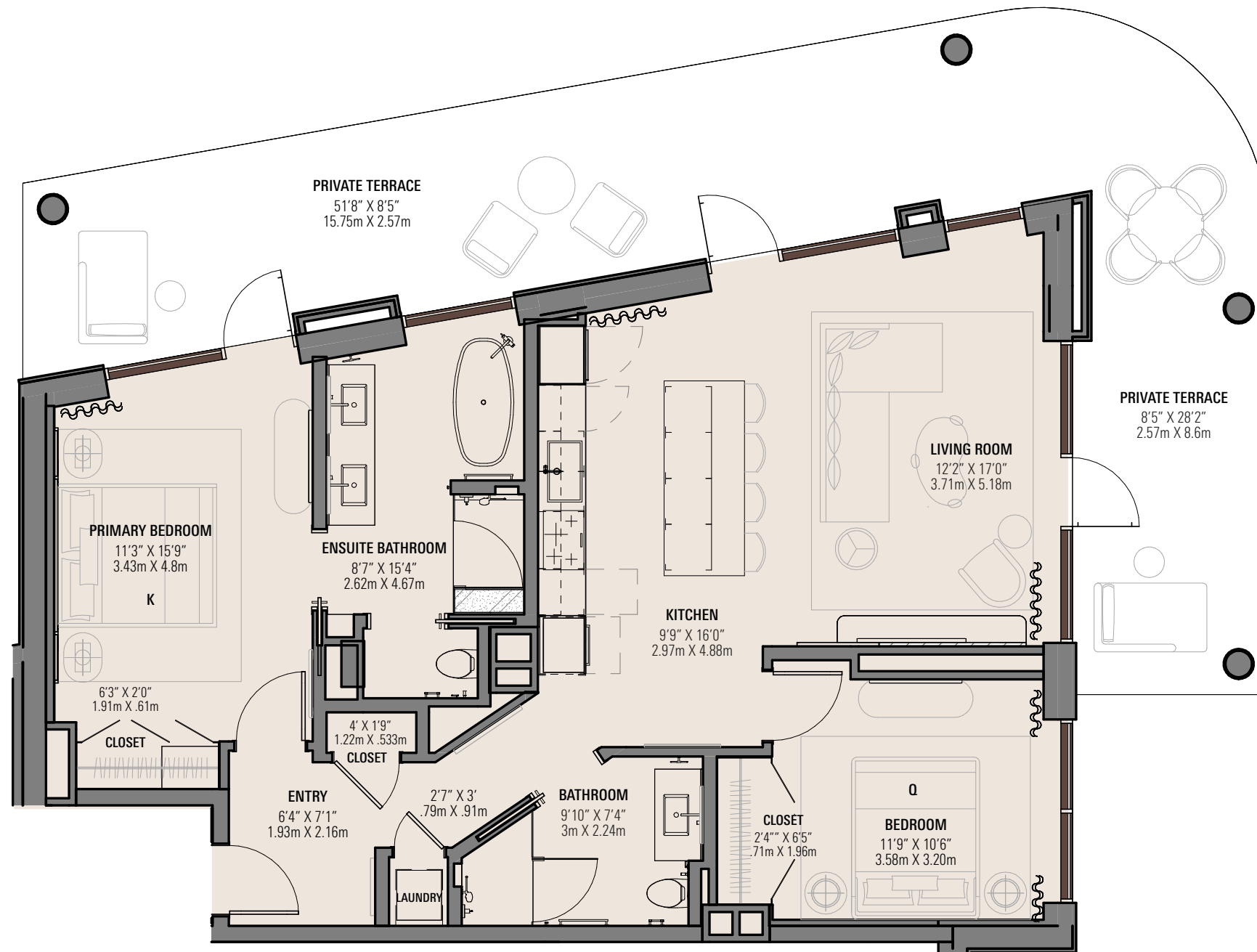
TYPE: PLAN D

The signature corner two bedroom designed for resort life, offering a generous terrace and a spa-inspired primary retreat.

RESORT SUNSET VIEW



All floor plans, renderings, and illustrations are for marketing purposes only and are subject to change without notice. Dimensions, square footage, layouts, and configurations are approximate and may vary from actual construction. Furniture, appliances, and decorative elements shown are for illustrative purposes only and are not included in the purchase unless expressly stated. Developer reserves the right to modify plans, specifications, materials, and features without prior notice or obligation. All information is believed accurate but not guaranteed; interested parties should verify details independently. For complete specifications and the legally binding description of your unit, please refer to your executed Sale and Purchase Agreement.



## 2 BEDROOM 2 BATHROOM

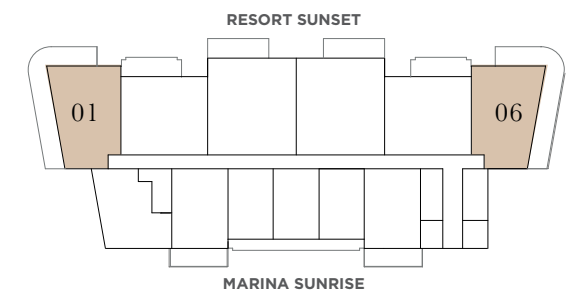
### PLAN D

RESORT SUNSET VIEW

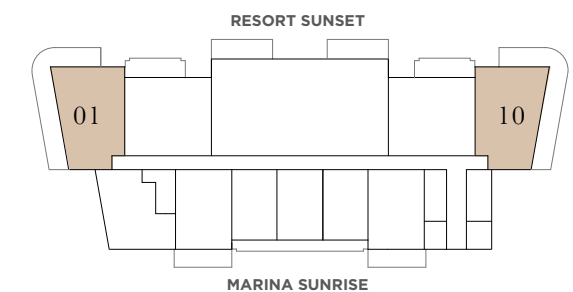
	SQ.FT.	SQ.M
INTERIOR	1,223	113.6
EXTERIOR	630	58.5
<b>TOTAL</b>	<b>1,853</b>	<b>172.1</b>

## PLUMERIA

FLOORS 2, 3 & 4



GROUND FLOOR



**BUILDING**  
PLUMERIA (R3)

**PLAN**  
D

**3 AVAILABLE PLANS OF THIS TYPE**  
A, C, D

**TOTAL NUMBER OF "2 BEDROOM - PLAN D" UNITS**  
16

**RESIDENCE NUMBERS FOR PLAN D (8 UNITS)**  
101/110/201/206/301/306/401/406





- VILLA ENCLAVE:
- |            |              |
|------------|--------------|
| 1. APRA    | 5. ALLAMANDA |
| 2. CASSIA  | 6. MAHOGANY  |
| 3. MARANTA | 7. ZAMIA     |
| 4. ORCHID  |              |

All floor plans, renderings, and illustrations are for marketing purposes only and are subject to change without notice. Dimensions, square footage, layouts, and configurations are approximate and may vary from actual construction. Furniture, appliances, and decorative elements shown are for illustrative purposes only and are not included in the purchase unless expressly stated. Developer reserves the right to modify plans, specifications, materials, and features without prior notice or obligation. All information is believed accurate but not guaranteed; interested parties should verify details independently. For complete specifications and the legally binding description of your unit, please refer to your executed Sale and Purchase Agreement.

# PLUMERIA

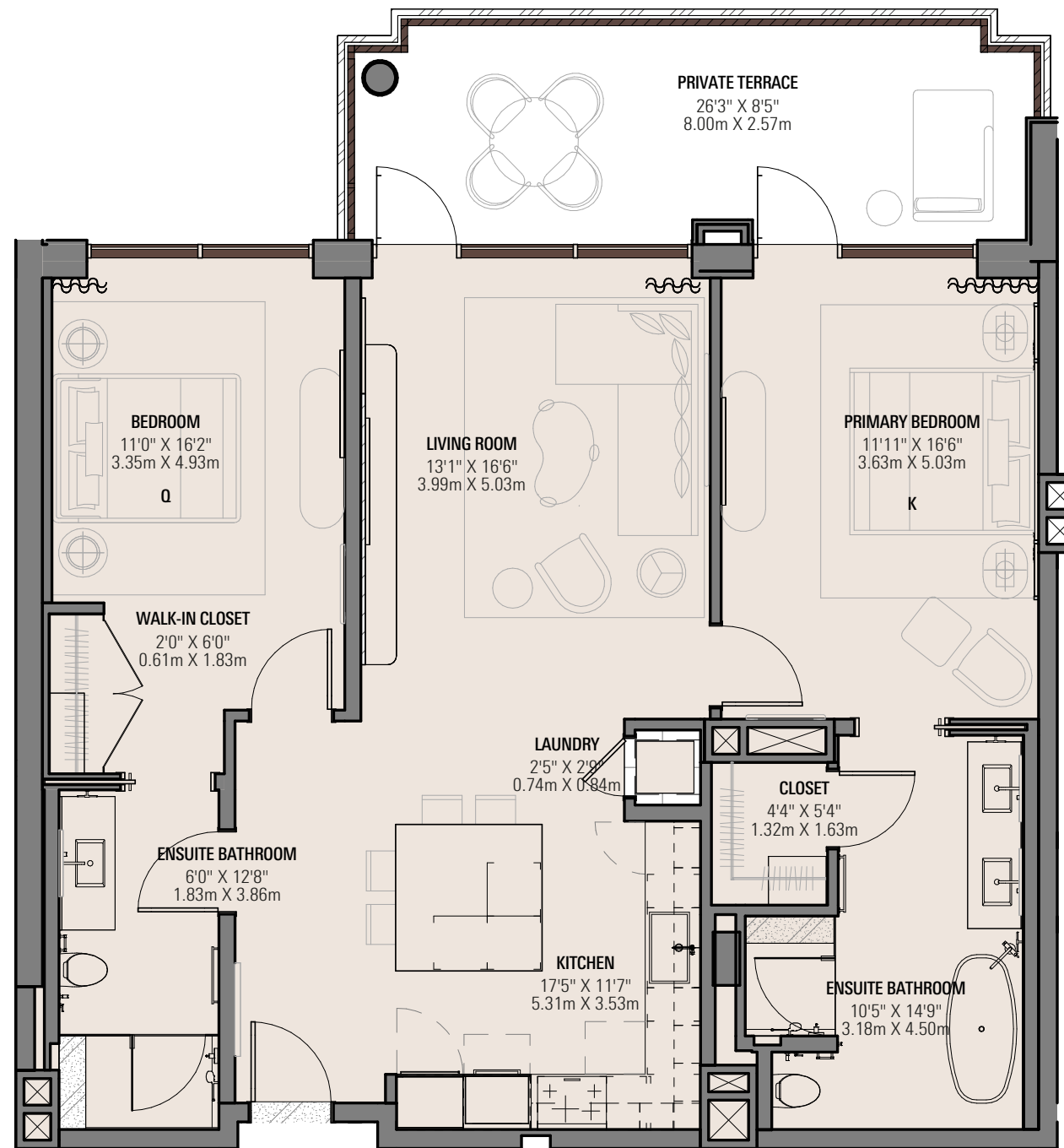
2 BEDROOM  
2 BATHROOM

TYPE: PLAN A

One of our most desirable two bedroom residences, designed around ocean and resort sightlines.

RESORT SUNSET VIEW





## 2 BEDROOM 2 BATHROOM

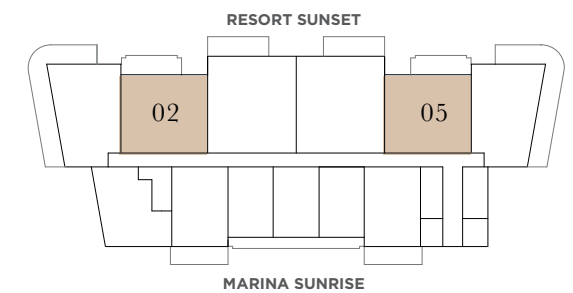
### TYPE: PLAN A

RESORT SUNSET VIEW

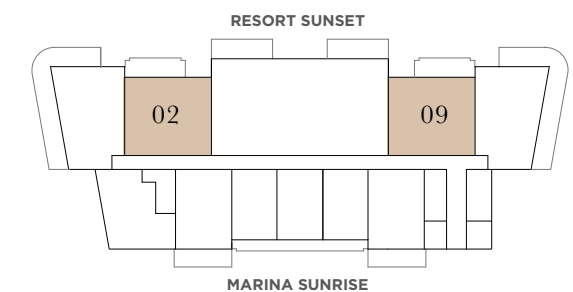
	SQ.FT.	SQ.M
<b>INTERIOR</b>	1,268	117.8
<b>EXTERIOR</b>	223	20.7
<b>TOTAL</b>	<b>1,491</b>	<b>138.5</b>

## PLUMERIA

FLOORS 2, 3 & 4



GROUND FLOOR



**BUILDING**  
PLUMERIA (R3)

**PLAN**  
A

**5 AVAILABLE PLANS OF THIS TYPE**  
A, B, C, E, F

**TOTAL NUMBER OF "2 BEDROOM - PLAN A" UNITS**  
18

**RESIDENCE NUMBERS FOR 2 BEDROOM PLAN A (8 UNITS)**  
102/109/202/205/302/305/402/405





- VILLA ENCLAVE:
- |            |              |
|------------|--------------|
| 1. APRA    | 5. ALLAMANDA |
| 2. CASSIA  | 6. MAHOGANY  |
| 3. MARANTA | 7. ZAMIA     |
| 4. ORCHID  |              |

All floor plans, renderings, and illustrations are for marketing purposes only and are subject to change without notice. Dimensions, square footage, layouts, and configurations are approximate and may vary from actual construction. Furniture, appliances, and decorative elements shown are for illustrative purposes only and are not included in the purchase unless expressly stated. Developer reserves the right to modify plans, specifications, materials, and features without prior notice or obligation. All information is believed accurate but not guaranteed; interested parties should verify details independently. For complete specifications and the legally binding description of your unit, please refer to your executed Sale and Purchase Agreement.

# PLUMERIA

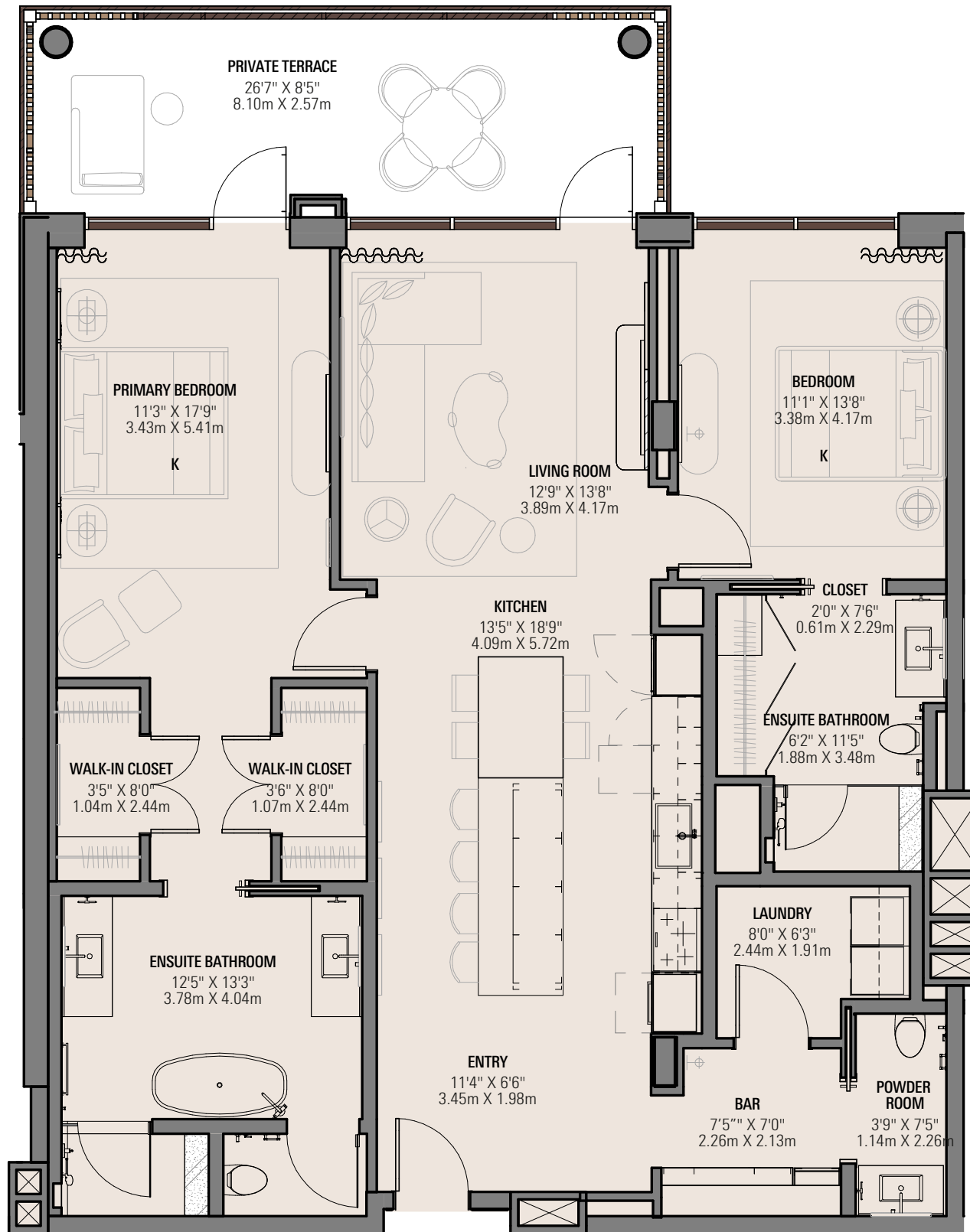
2 BEDROOM  
2 BATHROOM

TYPE: PLAN B

One of a limited collection of large two bedroom residences oriented for maximum ocean and resort views.

RESORT SUNSET VIEW





**2 BEDROOM  
2 BATHROOM**

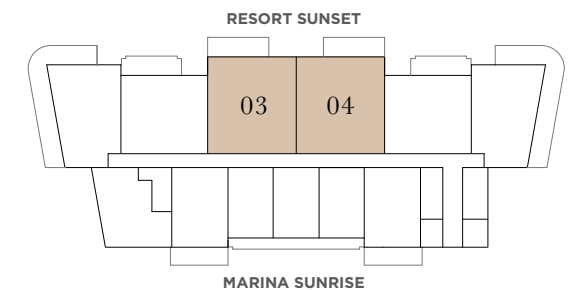
**TYPE: PLAN B**

RESORT SUNSET VIEW

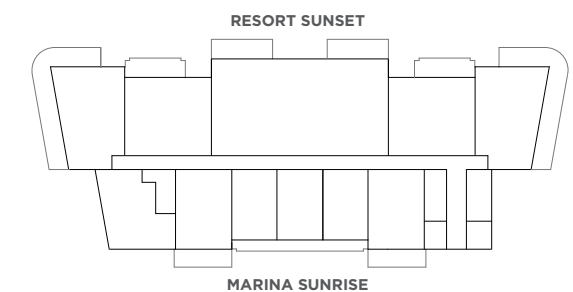
	SQ.FT.	SQ.M
<b>INTERIOR</b>	1,565	145.4
<b>EXTERIOR</b>	228	21.2
<b>TOTAL</b>	<b>1,793</b>	<b>166.5</b>

**PLUMERIA**

FLOORS 2, 3 & 4



GROUND FLOOR



**BUILDING**  
PLUMERIA (R3)

**PLAN**  
B

**8 AVAILABLE PLANS OF THIS TYPE**  
A, B, C, D, E, F, G, H

**TOTAL NUMBER OF "2 BEDROOM - PLAN B" UNITS**  
34

**RESIDENCE NUMBERS FOR 2 BEDROOM PLAN B (6 UNITS)**  
203/204/303/304/403/404

